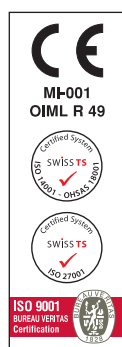


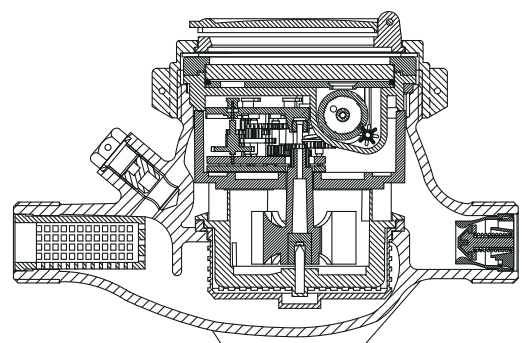
BAYLAN
WATER METERS

SD-1 Multi jet Semi-Dry type Water Meter



GENERAL

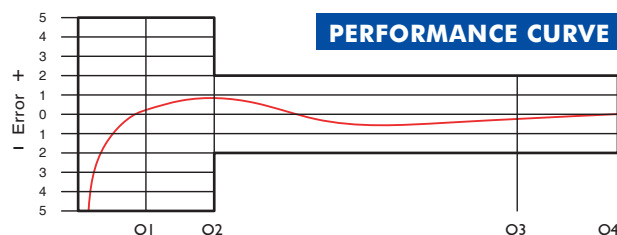
- MID Certificated
- Multijet principle assures a long service time
- Low head loss • Good sensitivity in initial starting
- Suitable for potable water
- Propylene glycol protected register
- Special glass with high resistance to pressure and impact
- Double filter • Non return valve
- Electrostatic painted body made of corrosion resistant brass
- Available for optical reading
- Puls output and AMR reading features are optional
- Body internally/externally e/p powder painted
- 3 years of warranty • Almost no maintenance
- Suitable for cold water up to 50°C
- Service and spare parts available for 10 years



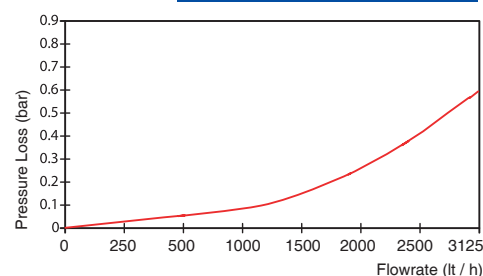
PERFORMANCE DATA

Permanent Flowrate	Q3	(m ³ /h)	: 2.5
Overload Flowrate	Q4	(m ³ /h)	: 3.125
Transitional Flowrate	Q2	(m ³ /h)	: 0.025
Minimum Flowrate	Q1	(m ³ /h)	: 0.0156
Initial Flowrate	Qi	(l/h)	: 5
Maximum Working Pressure		(bar)	: 16
Maximum Working Temperature		(°C)	: 50
Q3/Q1 (MI-001 OIML R49)			: 160
Pressure Loss (Q3)		(bar)	: 0.6
Maximum Registration Capacity		(m ³)	: 99999
Smallest Reading Resolution		(m ³)	: 0.00005
Mounting on the network			: Horizontal
Unit weight		(kg)	: 1.32
Package Weight (without connections)		(kg)	: 14.00
Package Weight (with connections)		(kg)	: 15.20
Quantity per package			: 10
Package dimensions		(cm)	: 27x48.5x20

PERFORMANCE CURVE

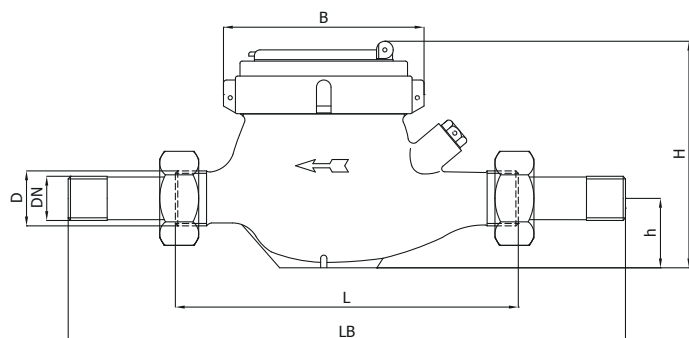


PRESSURE LOSS CURVE



DIMENSIONS

Nominal diameter	DN	15	mm
Connecting diameter	D	G 3/4 B	
Total overall meter height	H	112	mm
Axis height	h	33	mm
Length	L	165	mm
Width	B	95	mm
Length with connections	LB	241	mm



"Due to continuous development of our products, we reserve the right to modify our product design or construction without prior notice."