

Radio interference suppression filter, three-phase, low leakage current  
**HFD 356**



**General Data**

Rated voltage 3 x 480 Vac
Voltage range 0 - 480 Vac
Rated current 3 x 3 - 3 x 16 A
Leakage current 0.50 mA
Degree of protection IP 20
Rail mounting

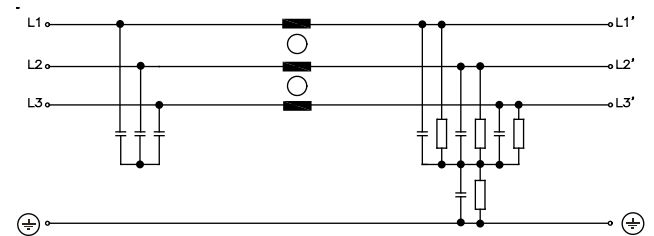
**Advantages**

For general requirements
Low leakage current
Single-stage filter concept
Efficient filter effect against line-bound interference emissions
Increase in the interference immunity of the connected consumer

**Applications**

Radio interference suppression filter for mains-side interference suppression of power supplies and electronic devices.

**Sample application**



**Standards**

Radio interference suppression filter to DIN EN 60939-2

**Approvals** **ERC**

1.1

1.2

1.3

2.1

2.2

3.1

3.2

3.3

4.0

5.1

5.2

# 3 Reactors / EMI filters

## Three-phase radio interference suppression filters



## Radio interference suppression filter, three-phase, low leakage current

### HFD 356



Typ	HFD 356-400/3	HFD 356-400/6	HFD 356-400/10	HFD 356-400/12	HFD 356-400/16
<b>Electrical data</b>					
<b>Special features</b>					
Characteristics	Suitable for the medical field	Suitable for the medical field	Suitable for the medical field	Suitable for the medical field	Suitable for the medical field
<b>Operating data</b>					
Rated voltage	3 x 480 Vac	3 x 480 Vac	3 x 480 Vac	3 x 480 Vac	3 x 480 Vac
Voltage range	0 - 480 Vac	0 - 480 Vac	0 - 480 Vac	0 - 480 Vac	0 - 480 Vac
Rated current	3 x 3 A	3 x 6 A	3 x 10 A	3 x 12 A	3 x 16 A
Leakage current (50 Hz)**	4.00 mA	4.00 mA	5.00 mA	5.00 mA	5.00 mA
Leakage current (50 Hz)*	0.50 mA	0.50 mA	0.50 mA	0.50 mA	0.50 mA
Rated frequency	50 - 60 Hz	50 - 60 Hz	50 - 60 Hz	50 - 60 Hz	50 - 60 Hz
Power loss	2.2 W	2.7 W	4.7 W	6.1 W	7.9 W
Overrating Capacity	150 %, shortly	150 %, shortly	150 %, shortly	150 %, shortly	150 %, shortly
<b>Environment</b>					
Climatic category	25/085/21 [in accordance with EN 60068-1]	25/085/21 [in accordance with EN 60068-1]	25/085/21 [in accordance with EN 60068-1]	25/085/21 [in accordance with EN 60068-1]	25/085/21 [in accordance with EN 60068-1]
Ambient temperature max.	45 °C	45 °C	45 °C	45 °C	45 °C
<b>Safety and protection</b>					
Type	Metal enclosure	Metal enclosure	Metal enclosure	Metal enclosure	Metal enclosure
Protection index	IP 20	IP 20	IP 20	IP 20	IP 20
Safety class (prepared)	I	I	I	I	I
Test voltage	2100 Vdc Phase/Phase, 2700 Vdc Phase/PE	2100 Vdc Phase/Phase, 2700 Vdc Phase/PE	2100 Vdc Phase/Phase, 2700 Vdc Phase/PE	2100 Vdc Phase/Phase, 2700 Vdc Phase/PE	2100 Vdc Phase/Phase, 2700 Vdc Phase/PE
<b>Notes</b>					
*	Leakage current measured against the maximum permissible input voltage fluctuation in accordance with IEC 38 ±10 %	Leakage current measured against the maximum permissible input voltage fluctuation in accordance with IEC 38 ±10 %	Leakage current measured against the maximum permissible input voltage fluctuation in accordance with IEC 38 ±10 %	Leakage current measured against the maximum permissible input voltage fluctuation in accordance with IEC 38 ±10 %	Leakage current measured against the maximum permissible input voltage fluctuation in accordance with IEC 38 ±10 %
**	Leakage current by loss of two phases	Leakage current by loss of two phases	Leakage current by loss of two phases	Leakage current by loss of two phases	Leakage current by loss of two phases
<b>Order numbers</b>					
<b>Order Number</b>	<b>HFD 356-400/3</b>	<b>HFD 356-400/6</b>	<b>HFD 356-400/10</b>	<b>HFD 356-400/12</b>	<b>HFD 356-400/16</b>

Typ	Connections phase	Connections PE	Fixing method	Weight	Dimension picture (in mm)	Dimension picture (in mm)					
						A	B	C	D	E	F
HFD 356-400/3	2.5 mm <sup>2</sup> spring terminal	Tab connector, 6.3 x 0.8 mm	Rail mounting	0.48 kg		127	45	110	52	33	120
HFD 356-400/6	2.5 mm <sup>2</sup> spring terminal	Tab connector, 6.3 x 0.8 mm	Rail mounting	0.49 kg		127	45	110	52	33	120
HFD 356-400/10	2.5 mm <sup>2</sup> spring terminal	Tab connector, 6.3 x 0.8 mm	Rail mounting	0.49 kg		127	45	110	52	33	120
HFD 356-400/12	2.5 mm <sup>2</sup> spring terminal	Tab connector, 6.3 x 0.8 mm	Rail mounting	0.72 kg		147	45	140	52	66	140
HFD 356-400/16	2.5 mm <sup>2</sup> spring terminal	Tab connector, 6.3 x 0.8 mm	Rail mounting	0.73 kg		147	45	140	52	66	140

## Dimension pictures

