

Radio interference suppression filter, single-phase **HLE 110**



General Data

Rated voltage 250 Vac
Voltage range 0 - 250 Vac
Rated current 4 - 55 A
Leakage current 8.50 mA
Degree of protection IP 20

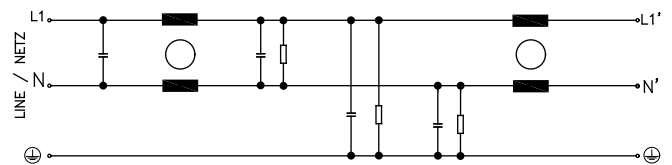
Advantages

For enhanced requirements
Single-stage filter concept
Efficient filter effect against line-bound interference emissions
Increase in the interference immunity of the connected consumer

Applications

Radio interference suppression filter for line-side interference suppression of single devices, frequency converters or as group interference suppression.

Sample application



Standards

Radio interference suppression filter to DIN EN 60939-2

Approvals **EAC**



Radio interference suppression filter, single-phase **HLE 110**



Typ	HLE 110-230/4	HLE 110-230/8	HLE 110-230/12	HLE 110-230/16	HLE 110-230/20	HLE 110-230/25
Electrical data						
Operating data						
Rated voltage	250 Vac	250 Vac	250 Vac	250 Vac	250 Vac	250 Vac
Voltage range	0 - 250 Vac	0 - 250 Vac	0 - 250 Vac	0 - 250 Vac	0 - 250 Vac	0 - 250 Vac
Rated current	4 A	8 A	12 A	16 A	20 A	25 A
Leakage current (50 Hz)*	8.50 mA	8.50 mA	8.50 mA	8.50 mA	8.50 mA	8.50 mA
Rated frequency	50 - 60 Hz	50 - 60 Hz	50 - 60 Hz	50 - 60 Hz	50 - 60 Hz	50 - 60 Hz
Oversrating Capacity	150 %, short-time	150 %, short-time	150 %, short-time	150 %, short-time	150 %, short-time	150 %, short-time
Environment						
Climatic category	25/085/21 (in accordance with EN 60068-1)	25/085/21 (in accordance with EN 60068-1)	25/085/21 (in accordance with EN 60068-1)	25/085/21 (in accordance with EN 60068-1)	25/085/21 (in accordance with EN 60068-1)	25/085/21 (in accordance with EN 60068-1)
Ambient temperature max.	50 °C	50 °C	50 °C	50 °C	50 °C	50 °C
Safety and protection						
Type	Metal enclosure	Metal enclosure	Metal enclosure	Metal enclosure	Metal enclosure	Metal enclosure
Protection index	IP 20	IP 20	IP 20	IP 20	IP 20	IP 20
Safety class (prepared)	I	I	I	I	I	I
Test voltage	1700 Vdc Phase/Phase, 2700 Vdc Phase/PE	1700 Vdc Phase/Phase, 2700 Vdc Phase/PE	1700 Vdc Phase/Phase, 2700 Vdc Phase/PE	1700 Vdc Phase/Phase, 2700 Vdc Phase/PE	1700 Vdc Phase/Phase, 2700 Vdc Phase/PE	1700 Vdc Phase/Phase, 2700 Vdc Phase/PE
Notes						
*	Leakage current measured against the maximum permissible input voltage fluctuation in accordance with IEC 38 ±10 %	Leakage current measured against the maximum permissible input voltage fluctuation in accordance with IEC 38 ±10 %	Leakage current measured against the maximum permissible input voltage fluctuation in accordance with IEC 38 ±10 %	Leakage current measured against the maximum permissible input voltage fluctuation in accordance with IEC 38 ±10 %	Leakage current measured against the maximum permissible input voltage fluctuation in accordance with IEC 38 ±10 %	Leakage current measured against the maximum permissible input voltage fluctuation in accordance with IEC 38 ±10 %
Order numbers						
Order Number	HLE 110-230/4	HLE 110-230/8	HLE 110-230/12	HLE 110-230/16	HLE 110-230/20	HLE 110-230/25

1.1

1.2

1.3

2.1

2.2

3.1

3.2

3.3

4.0

5.1

5.2

3 Reactors / EMI filters

Single-phase radio interference suppression filters



Radio interference suppression filter, single-phase

HLE 110



Typ		HLE 110-230/30	HLE 110-230/42	HLE 110-230/55
Electrical data	Operating data			
	Rated voltage	250 Vac	250 Vac	250 Vac
	Voltage range	0 - 250 Vac	0 - 250 Vac	0 - 250 Vac
	Rated current	30 A	42 A	55 A
	Leakage current (50 Hz)*	8.50 mA	8.50 mA	8.50 mA
	Rated frequency	50 - 60 Hz	50 - 60 Hz	50 - 60 Hz
	Oversrating Capacity	150 %, short-time	150 %, short-time	150 %, short-time
	Environment			
	Climatic category	25/085/21 (in accordance with EN 60068-1)	25/085/21 (in accordance with EN 60068-1)	25/085/21 (in accordance with EN 60068-1)
	Ambient temperature max.	50 °C	50 °C	50 °C
Safety and protection				
Type	Metal enclosure	Metal enclosure	Metal enclosure	
Protection index	IP 20	IP 20	IP 20	
Safety class (prepared)	I	I	I	
Test voltage	1700 Vdc Phase/Phase, 2700 Vdc Phase/PE	1700 Vdc Phase/Phase, 2700 Vdc Phase/PE	1700 Vdc Phase/Phase, 2700 Vdc Phase/PE	
Notes				
*	Leakage current measured against the maximum permissible input voltage fluctuation in accordance with IEC 38 ±10 %	Leakage current measured against the maximum permissible input voltage fluctuation in accordance with IEC 38 ±10 %	Leakage current measured against the maximum permissible input voltage fluctuation in accordance with IEC 38 ±10 %	
Order numbers				
Order Number	HLE 110-230/30	HLE 110-230/42	HLE 110-230/55	



Radio interference suppression filter,
single-phase
HLE 110



Typ	Connections phase	Connections PE	Fixing method	Fixing screws	Weight	Dimension picture (in mm)	Dimension picture (in mm)							
							A	B	C	D	E	F	G	H
HLE 110-230/4	Screw clamp, 4 mm ²	Bolt, M5	Mounting lugs	M5	0.52 kg	1	160	38	75	-	19	136	150	5.5
HLE 110-230/8	Screw clamp, 4 mm ²	Bolt, M5	Mounting lugs	M5	0.58 kg	2	160	38	75	-	19	136	150	5.5
HLE 110-230/12	Screw clamp, 4 mm ²	Bolt, M5	Mounting lugs	M5	0.78 kg	3	190	38	75	-	19	166	180	5.5
HLE 110-230/16	Screw clamp, 4 mm ²	Bolt, M5	Mounting lugs	M5	0.78 kg	4	190	38	75	-	19	166	180	5.5
HLE 110-230/20	Screw clamp, 4 mm ²	Bolt, M5	Mounting lugs	M5	0.80 kg	5	190	38	75	-	19	166	180	5.5
HLE 110-230/25	Screw clamp, 10 mm ²	Bolt, M6	Mounting lugs	M6	1.30 kg	6	230	50	95	25	12.5	200	215	5.5
HLE 110-230/30	Screw clamp, 10 mm ²	Bolt, M6	Mounting lugs	M6	1.35 kg	7	230	50	95	25	12.5	200	215	5.5
HLE 110-230/42	Screw clamp, 10 mm ²	Bolt, M6	Mounting lugs	M6	1.45 kg	8	230	50	95	25	12.5	200	215	5.5
HLE 110-230/55	Screw clamp, 16 mm ²	Bolt, M6	Mounting lugs	M6	2.00 kg	9	225	85	95	60	12.5	230	210	5.5

Dimension pictures

