

Product Group
Braking Devices



Quality is our Drive.

PETER electronic Quality is our Drive.

Product Group Braking Devices

PETER electronic sets your machines intelligently in motion, controls them reliably, and brings them to a standstill in a controlled way. Our comprehensive range of products includes braking devices, frequency inverters, thyristor controllers and soft starters. PETER electronic's braking devices enable low-wear and reliable braking of your machines and plants. Electronic DC brakes from PETER electronic are used wherever the deceleration time of the tool (saw disk, cutting blade, milling cutter, etc.) needs to be shortened for time and/or safety reasons. Our braking systems offer you convincing advantages:

Reduction of your routine maintenance costs

Extended lifetime of your equipment

Freedom from interference according to EMC-directive

No additional line reactors required

Competent technical support

Development of individual solutions

Quality and service – “made in Germany”

A COMPREHENSIVE OFFER

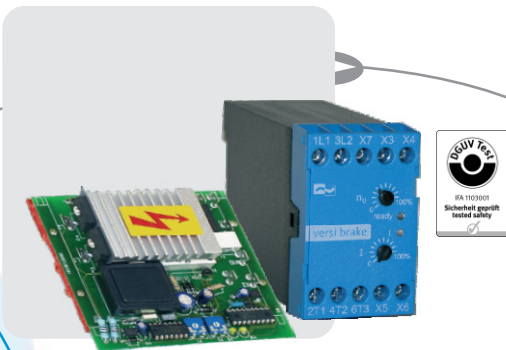
We offer solutions for all kinds of application and industries. We will be pleased to develop individual devices and types for you.



The systems VersiBrake meet the requirements of the IFA (Technical Committee for Wood) according to the Test Principles Wood working machines GS-HO-01. The VersiBrake L (LP) devices are certified with the DGUV test mark. Upon request this is also possible for further versions.

Braking Devices with standstill-dependent braking

Braking Device VersiBrake 6/25/30L (LP)



- braking current control: simple and safe commissioning due to infinitely variable braking current
- space-saving variant, in 45mm housing or on PCB
- controlled by microcontroller
- wear-resistant and maintenance-free
- integrated braking contactor
- easy mounting, also for retrofitting into existing plants
- double safety by control via motor contactor and motor voltage detection
- also suitable for use with single-phase motors
- for modernizing existing plants and adapting your machines to applicable trade association requirements
- extending the motor life due to automatic standstill detection function and switch-off of braking current after motor standstill

Advantages:

space-saving, favorably priced, compliant to German trade association requirements, safety, reduced machine cycle times by self-optimizing delay time for reduction of residual e.m.f., optional additional functions on request



Braking Device VersiBrake 25

- limitation of braking current to 1.3-fold rated device current
- controlled by microcontroller
- wear-resistant and maintenance-free
- integrated braking contactor
- easy mounting, also for retrofitting into existing plants
- for modernizing existing plants and adapting your machines to applicable trade association requirements
- extending the motor life due to automatic standstill detection function and switch-off of braking current after motor standstill

Advantages:

reduced machine cycle times by self-optimizing delay time for reduction of residual e.m.f., optional additional functions on request



Braking Device VersiBrake 36

- limitation of braking current to 1.3-fold rated device current
- controlled by microcontroller
- wear-resistant and maintenance-free
- easy mounting, also for retrofitting into existing plants
- for modernizing existing plants and adapting your machines to applicable trade association requirements
- extending the motor life due to automatic standstill detection function and switch-off of braking current after motor standstill

Advantages:

reduced machine cycle times by self-optimizing delay time for reduction of residual e.m.f., optional additional functions on request

Braking Devices with standstill- and time-dependent braking

Braking Device VersiBrake 40 ... 600

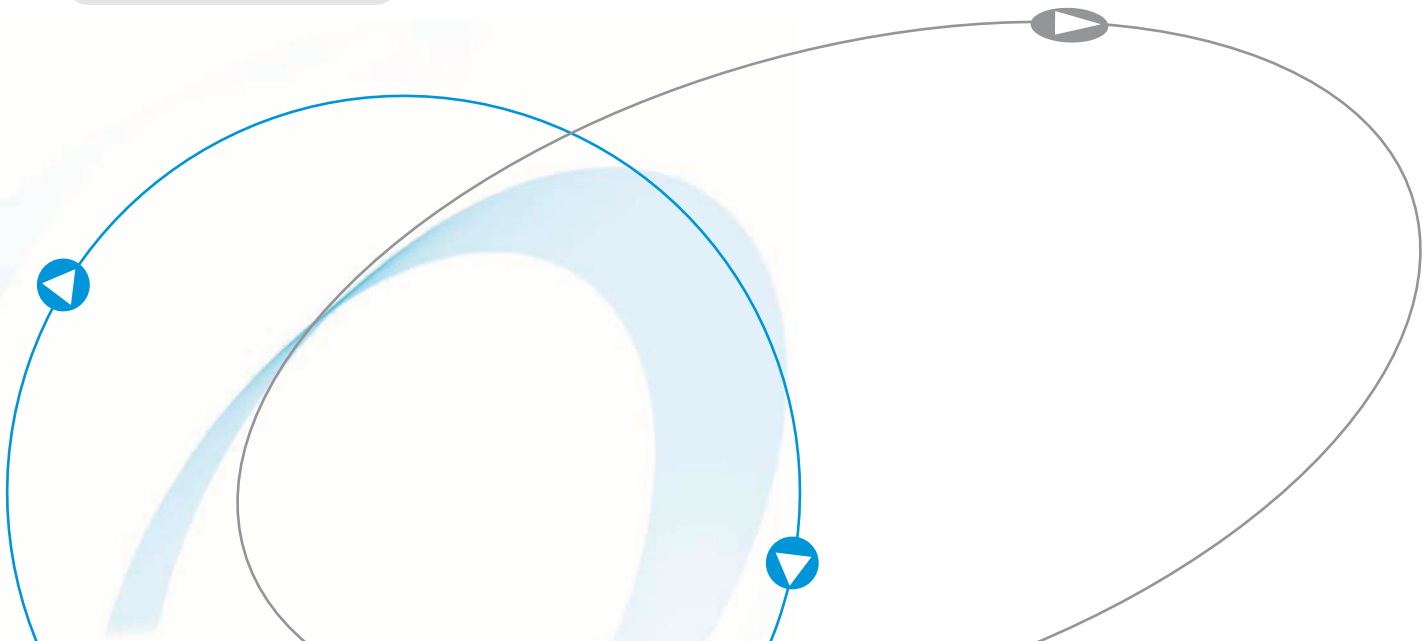
- braking current control: simple and safe commissioning due to infinitely variable braking current
 - controlled by microcontroller
 - wear-resistant and maintenance-free
 - integrated braking contactor up to 60A
 - easy mounting, also for retrofitting into existing plants
 - for modernizing existing plants and adapting your machines to applicable trade association requirements
 - UL certificated
- robust metal housing, degree of protection: IP 20
 - extending the motor life due to automatic standstill detection function and switch-off of braking current after motor standstill
- Advantages:**
reduced machine cycle times by self-optimizing delay time for reduction of residual e.m.f., optional additional functions on request



Braking Devices with time-dependent braking

Braking Devices VB 230/400-6/25/30LT

- suitable for all asynchronous motors and for mono phase motors
 - controlled by microcontroller
 - easy mounting, also for retrofitting into existing plants
 - successor for braking devices type BR and BR-L
- Advantages:**
overload protection, braking current control, potential-free output for motor contactor interlocking during braking; also usable to energize the star contactor during braking



Overview Features

Type designation	VB LT	VB-6/25/30L (LP)	VB25	VB36	VB 40...600	
Rated device current	6 bis 30A	6/25/30A	25A	36A	40 bis 600A	
					≤60A	≥100A
Features (options included)						
Brake start via motor contactor	Included	Included	Included	Included	Included	Included
Brake start via motor voltage	Included	Included	Included	Included	Included	Included
Integrated braking contactor	Included	Included	Included	Included	Included	Included
Standstill-dependent braking	Included	Included	Included	Included	Included	Included
Time-dependent braking	Included	Included	On request	Included	Included	Included
Signaling relay for exceeded braking times	Included	Included	Included	Included	Included	Included
Current control 0 up to 100%	Included	Included	On request	On request	Included	Included
Automatic remanence time optimization	Included	Included	Included	Included	Included	Included
Thermal overload monitoring	Included	Included	Included	Included	Included	Included
Monitoring of braking frequency	Included	Included	On request	On request	Included	Included
2nd braking time selectable	Included	Included	Included	Included	Included	Included
Manual braking stop selectable	Included	Included	Included	Included	Included	Included
Fault signaling relay	Included	only LP	Included	Included	Included	Included
Braking current display	Included	Included	Included	Included	Included	Included
Wide-voltage-range-capable	Included	Included	Included	Included	Included	Included
Plug-in control terminals	Included	Included	Included	Included	Included	Included
Motor PTC monitoring	Included	Included	Included	Included	Included	Included
Star-delta starting control	Included	Included	Included	Included	Included	Included
Special voltage	Included	Included	Included	Included	Included	Included
DGUV test mark	Included	Included	Included	Included	On request	On request
UL/ CSA Certification	Included	Included	Included	Included	Included	Included

Included
 On request
 Not included

Applications

wood-working machines (e.g., panel-sizing saws, band saws, moulding and planing machines, butt reducers), conveyor systems with long coast-down times, centrifuges, vibration screening machines, vibrating conveyor systems, welding and plastering machines, machines for the meat-processing industry, stone-working machines, metal-working machines, plastics processing machines

Our range of products:

Soft Starters

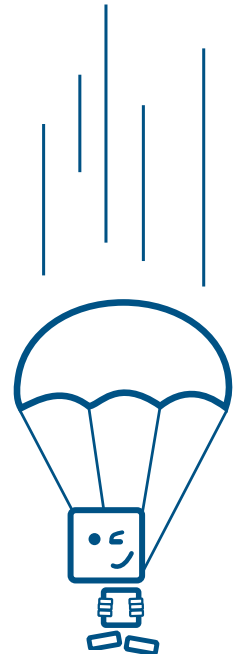
Braking Devices

Combined Motor Start and Braking Devices

Variable Speed Drives

DC-Controllers

Monitoring Modules



07/2017



www.peter-electronic.com

